



The Off-Side Undo

English Motoring Club of Mississippi

(601) 442-8684

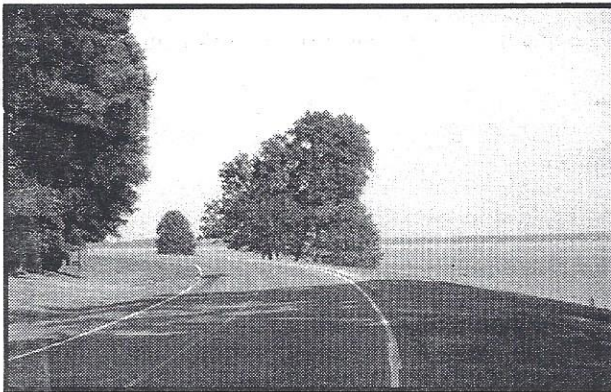
President: Terry Trovato Contributing Editor: Pat Cashman

"A GENTLEMAN DOES NOT MOTOR ABOUT AFTER DARK." -- JOSEPH LUCAS, ATTRIB.

Picnic on the Natchez Trace Parkway

by Terry Trovato

SEPTEMBER 2002



The river bend area of the Natchez Trace Parkway makes for a scenic drive.

Photos by Terry Trovato

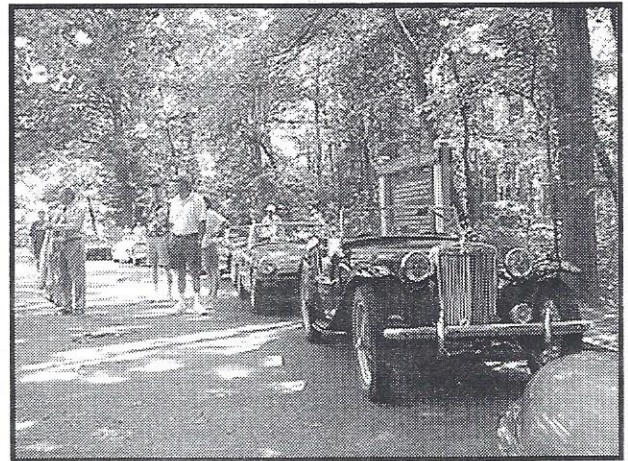
JACKSON, MS — Cool breezes and no bugs (yes, *no bugs!*) made for a pleasant 2nd Annual Summer Outing recently. An enthusiastic contingent of English Motoring Club members and their guests took in the sights offered by the picturesque and historic Natchez Trace Parkway, which connects Nashville, TN, with Natchez, MS. Unbelievably, two complete families of turkeys were spotted en route.

Along the way to the picnic site, River Bend Park, the group stopped to tour a cypress swamp, which included a 25-minute nature walk.

EMC member Bill Beavers stole the show at the picnic by bringing a vintage World War II portable phonograph that acoustically played 78rpm records. The sound of Harry James' trumpet featuring his Big Band from the swing era coming through the tiny "speaker" was amazingly good. Leaving his Morgan at home for this event, Bill was resplendent in his new Jaguar S-type saloon.

A good time was had by all, and Mother Nature cooperated beautifully.

The EMC contingent stopped on the way to the picnic to tour a cypress swamp.





'BRITS ON THE BLUFF'
BRITISH CAR SHOW AND COMPETITION

October 11 - 13, 2002

Natchez, Mississippi

Presented By

English Motoring Club

23 Rochelle Street

Brandon, Mississippi 39047-8470

(601) 442-8684

This will be a British Car Show and Competition complete with awards and dash plaques presented by Mississippi's English Motoring Club. Entry fee of \$25 per car.

A Fun-Filled Weekend

Friday evening October 11th will feature a Welcome Reception at the Ramada Hilltop Inn, which has a commanding view of the Mississippi River. On Saturday October 12th, Brits on the Bluff car show participants will motor through town accompanied by a Police Escort to the show site: the magnificent antebellum mansion "Rosalie," circa 1820. It is within walking distance to fine antique stores, quaint gift shops and outstanding restaurants. In addition, Friday through Sunday, over 20 antebellum mansions will be open for touring. Architecturally magnificent, many feature priceless antiques and accessories. All cars will be in place by 11:00 a.m. Saturday and judging will commence at 12:30 p.m. Many special awards will also be presented during the Awards Ceremony which will take place at approximately 3:30 p.m.

Overnight Accommodations

The English Motoring Club has reserved a block of rooms at the Ramada Inn Hilltop. When making reservations, be sure and tell them you are with the English Motoring Club:

Motels -

Ramada Inn Hilltop 800-256-6311. This motel has a commanding view of the Mississippi River and is right across the highway from the assembly point for the Parade through town. Special EMC rate of \$65 per night.

Natchez Bed & Breakfasts - For B&B reservations simply call Natchez Pilgrimage Tours at 1-800-647-6742. Many Natchez B&Bs are restored antebellum mansions; NPT will give you a slate of prices and describe the facilities in detail.

For further information about any or all aspects of the show and weekend call or e-mail Terry Trovato (601) 442-8684; terryt@callon.com